

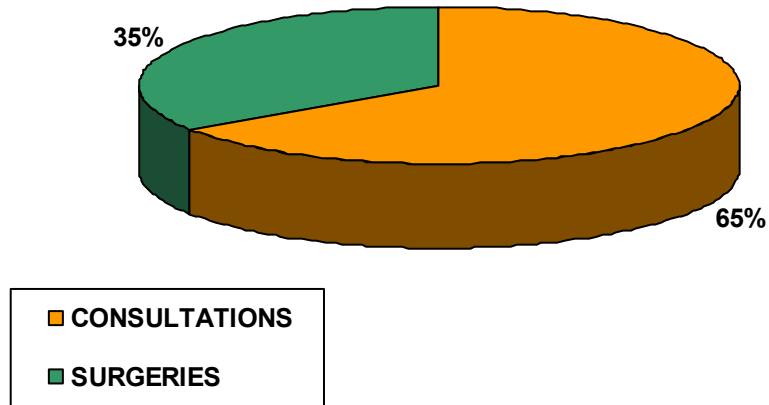
**DARWIN ANIMAL DOCTORS. GALAPAGOS ISLANDS.
AINOA NIETO CLAUDIN. DVM.**

MONTHLY REPORT: NOVEMBER 2014.

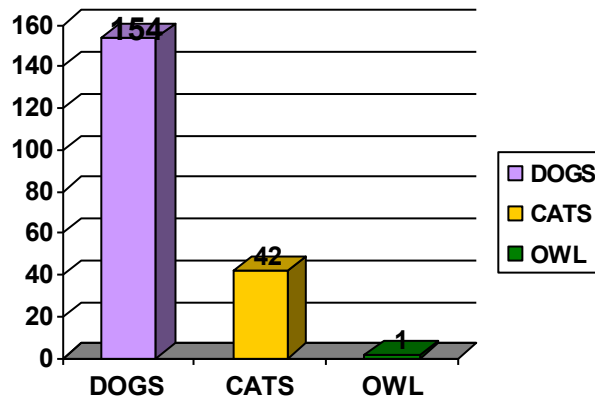
| | |
|------------------------|------------|
| TOTAL CASES | 197 |
| SURGERY | 68 |
| NEUTER | 65 |
| PARASITE TREATMENT | 136 |
| SKIN DISEASE | 11 |
| EAR DISEASE | 4 |
| EYE DISEASE | 2 |
| TRAUMA | 11 |
| TICK DISEASE | 26 |
| PARVOVIRUS | 0 |
| DISTEMPER | 1 |
| EUTHANASIA | 4 |
| AURAL HEMATOMA | 2 |
| TUMOR | 3 |
| DIGESTIVE CONDITIONS | 16 |
| GENERAL CHECK | 37 |
| EMERGENCY | 10 |
| POISONING | 1 |
| URINARY CONDITIONS | 2 |
| GI OBSTRUCTION | 1 |
| ABCESS | 2 |
| PYOMETRA | 1 |
| DYSTOCIA | 2 |
| RESPIRATORY CONDITIONS | 4 |

| VOLUNTEERS | COUNTRY | QUALIFICATION | WEEKS |
|----------------------|----------------|----------------------|--------------|
| María Ejarque | SPAIN | DVM | 4 |
| Ana Guijarro | SPAIN | DVM | 4 |
| Michael Lund | USA | DVM | 3 |

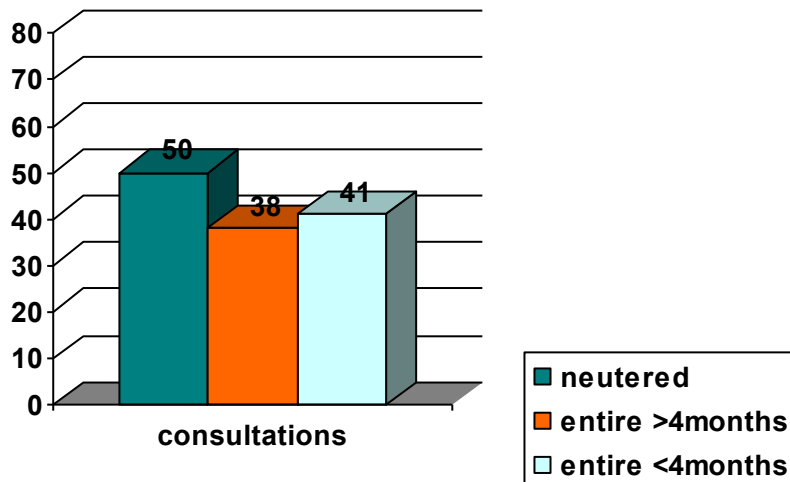
PIE CHART 1: CONSULTATIONS (129) VS. SURGERIES (68)



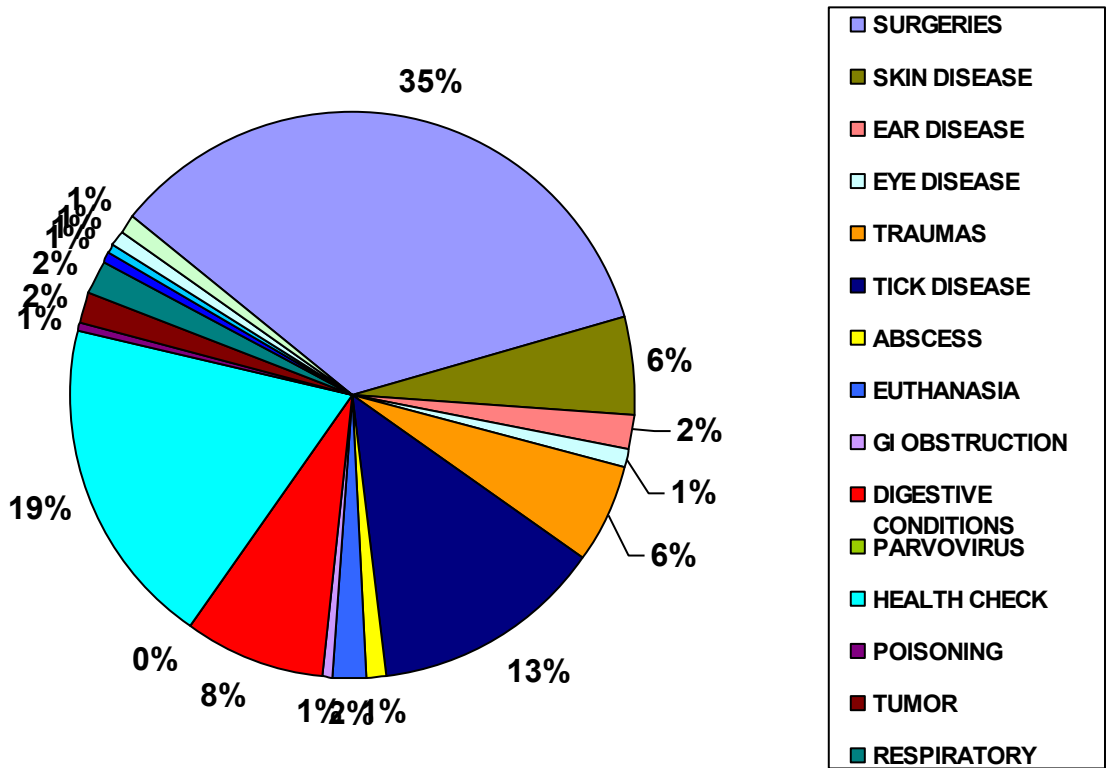
GRAPH 2: PATIENTS: DOGS (154) VS. CATS (42)



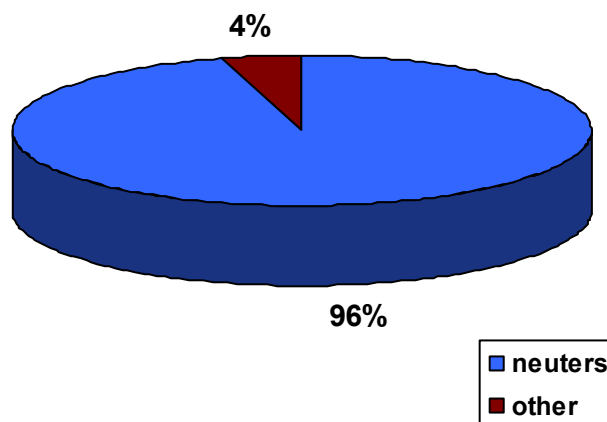
GRAPH 3: CONSULTATIONS: NEUTERED (50) / ENTIRE (79)



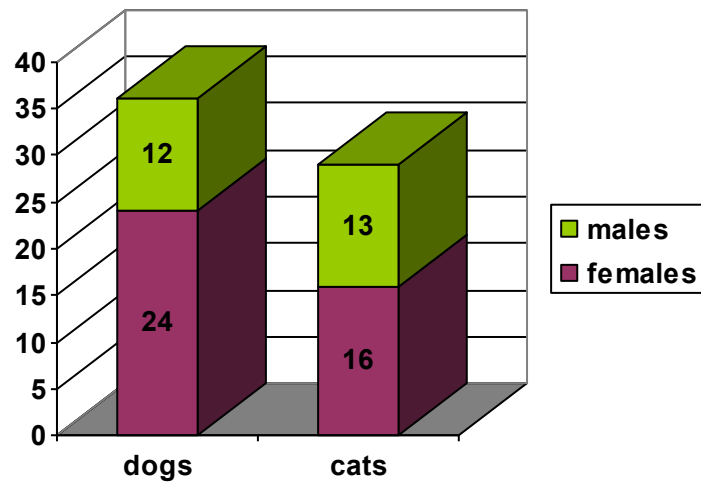
PIE CHART 4: TOTAL CASES



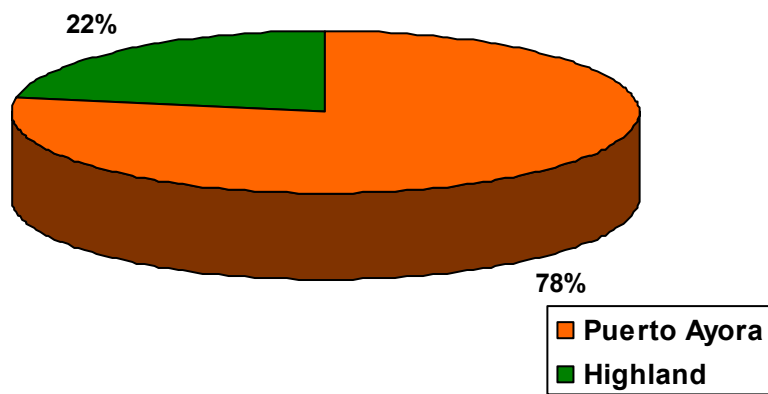
PIE CHART 5: TYPE OF SURGERY



GRAPH 6: NEUTERS: DOGS (36) VS. CATS (29)

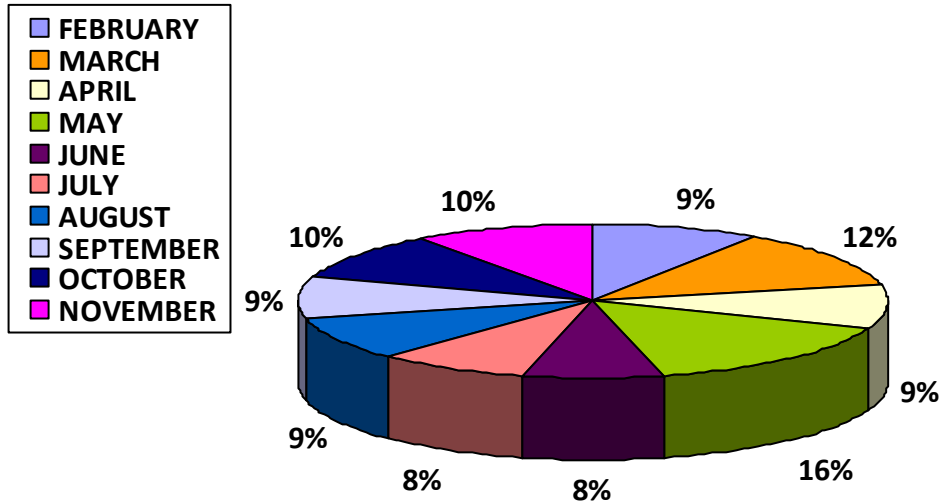


PIE CHART 7: LOCATION

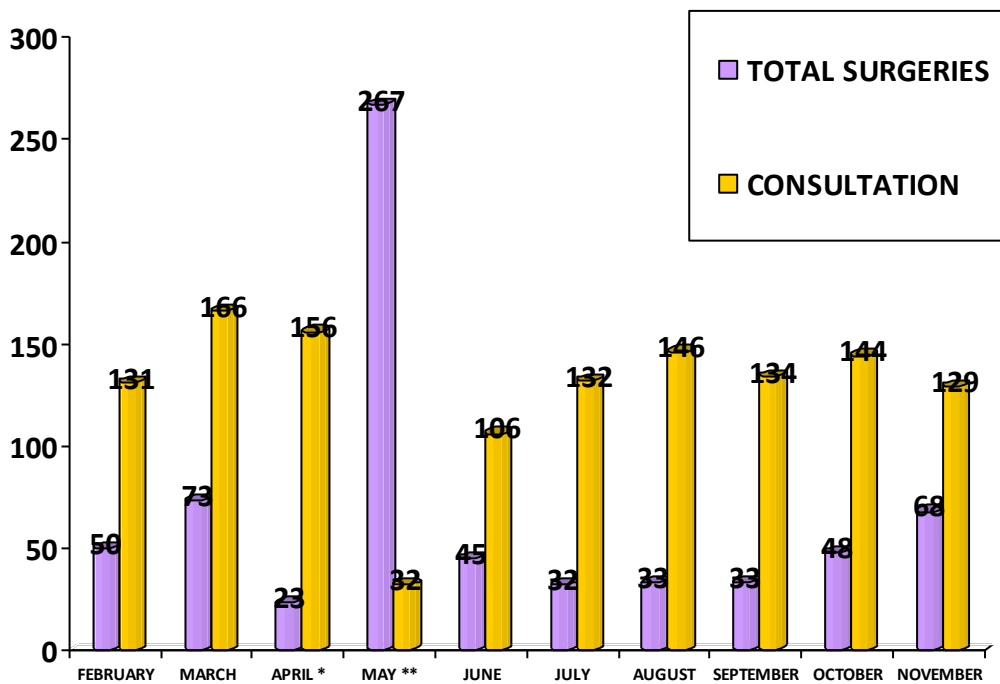


TEN MONTHS SUMMARY: FROM FEBRUARY TO NOVEMBER:

PIE CHART 1: TOTAL CASES (1948)



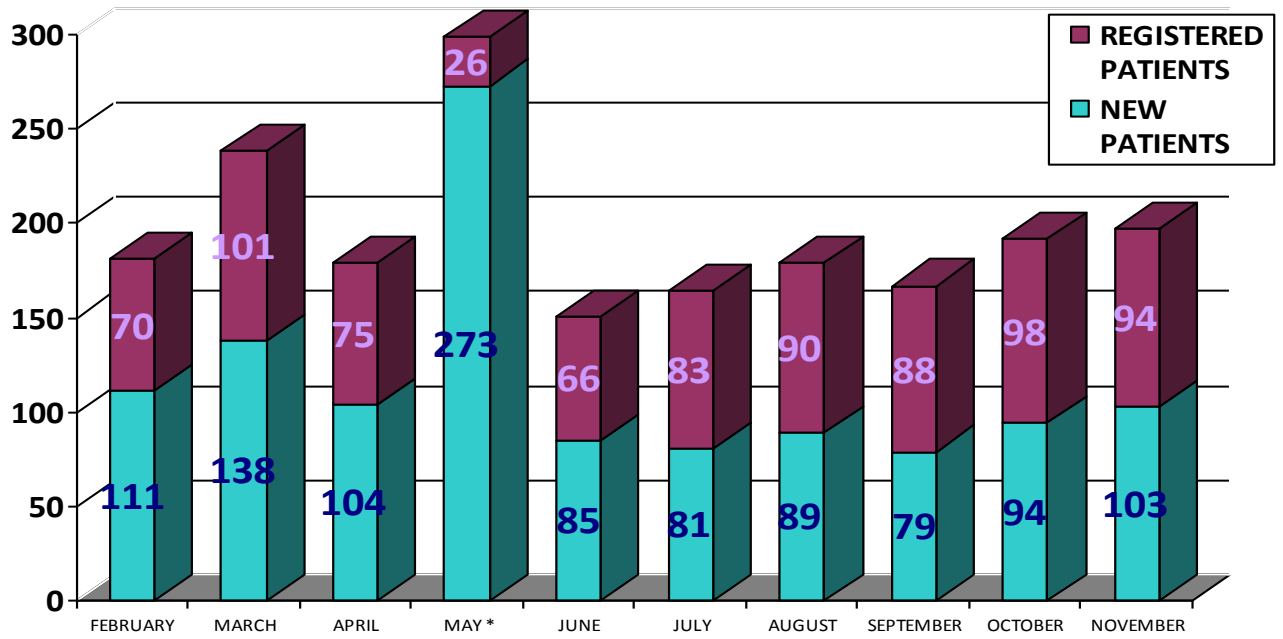
GRAPH 2: SURGERIES (604) VS. CONSULTATIONS (1147)



* No volunteers for 3 weeks.

** Sterilization Campaign.

GRAPH 3: NEW PATIENTS (1157) VS REGISTERED PATIENTS (791)



* Sterilization Campaign.